

**SAT**  
FEBRUARY 10<sup>TH</sup>

*Stoneman Douglas*  
**WINTER CONTEST**

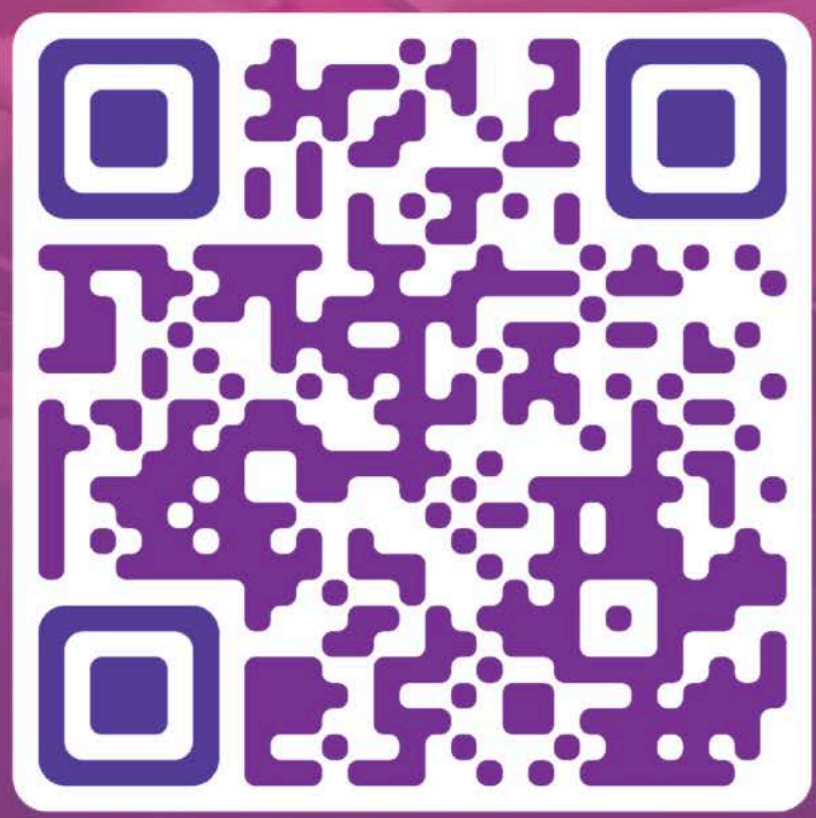
**STONEMAN DOUGLAS**  
COLORGUARD

**SEWGA**





Scan to view today's  
Online Program







## STONEMAN DOUGLAS COLORGUARD

# PROGRAM LETTERS

Dear Winter Guard Lovers,

Welcome to the 24<sup>th</sup> annual Stoneman Douglas Winter Guard Competition. We are honored that you have chosen to participate and compete in this exciting and educational event and are thrilled to have you here at Stoneman Douglas High School.

The hours of disciplined practices, performances, and commitment to quality will undoubtedly be evident today, throughout the band and color guard performances. I know that producing "Superior" quality programs requires unwavering devotion and sacrifice. It is because of individuals like you that today's winter guard students have so many opportunities to shine. We are fortunate to have this event to share all that they have accomplished.

I hope you enjoy the fun, food, and fellowship while learning from others. Please let us know if we can be of any assistance to you during your visit.

I wish you all tremendous luck!

With Eagle Pride,

Michelle Kefford

Principal

Stoneman Douglas High School

[www.eagleregiment.com](http://www.eagleregiment.com) | [www.stonemandouglasband.com](http://www.stonemandouglasband.com)



STONEMAN DOUGLAS COLOR GUARDS  
[www.stonemandouglasband.com](http://www.stonemandouglasband.com) | [www.eagleregiment.com](http://www.eagleregiment.com)







## STONEMAN DOUGLAS COLORGUARD

### SFWGA CONTEST

It is with great pleasure that I welcome you to Stoneman Douglas High School! Our school community continues to be a source of unlimited potential for growth, family involvement and academic excellence. I sincerely thank you for your support and pride in all of today's participants, as it mirrors their tremendous practice and performance efforts.

The Eagle Regiment's number one priority is to "Have Fun!" We enthusiastically encourage you to share in this priority today and every day. Thank you for supporting our students and the South Florida Winter Guard Association!

Respectfully,

Stephen K. Rivero  
Director of Bands  
Marjory Stoneman Douglas High School

[www.eagleregiment.com](http://www.eagleregiment.com) | [www.stonemandouglasband.com](http://www.stonemandouglasband.com)



STONEMAN DOUGLAS COLOR GUARDS  
[www.stonemandouglasband.com](http://www.stonemandouglasband.com) | [www.eagleregiment.com](http://www.eagleregiment.com)





# *Contest Judges...*

EQUIPMENT: Jen Karp

MOVEMENT: Dee Dee Shank

DESIGN: Kevin Bell

GE: Justin Sullivan

GE: Jack Pursifull

TIMING & PENALTIES: Joan Joselyn

CHIEF JUDGE: Randy Nelson

## ***SPECIAL THANKS***

The Stoneman Douglas Indoor Programs would like to say a big thanks to **Lauren Susman** and the entire **MARCHING EAGLES PARENT ASSOCIATION** for organizing and running today's event! We couldn't have done it without the love and support you all show us everyday!

*Be Positive  
Be Passionate  
Be Proud to be an Eagle*

SEMGAA EVENT STAFF







SOUTH FLORIDA WINTER GUARD ASSOCIATION

## *who we are.....*

The South Florida Winter Guard Association is chartered by the State of Florida as a non-profit corporation, and approved by the IRS as a 501(c)3 public charity.

The organization was established in 1980 by several high school band directors to continue the marching band drill team experience into the winter months. The fledgling organization was aligned with and patterned after the newly formed Winter Guard International which had been created three years earlier to establish world-wide standards for indoor color guard judging and competition.

Throughout the 1990's the SFWGA grew and embraced 20 to 30 color guard units in weekly competitions. During this time, South Florida became a respected name in Winter Guard International, producing medal winners such as Stoneman Douglas, Miramar HS, Alliance of Miami, J P Taravella, Coconut Creek, and Santaluces.

## *what we do.....*

We instill in students and young adults an appreciation for the Performing Arts, and accomplish this by encouraging artistic expression and individual accomplishment through a blend of rhythm, music, dance, precision drill work, and dramatic effect.

We use competition as the venue to build the values of teamwork, leadership and discipline in our student performers. The high school band programs remain the core focus of our responsibilities and initiatives. Our activities are designed and intended to augment and complement high school band programs, and exist in harmony with the educational philosophies of the Band Director.

We offer a full range of skill groups, from beginning novice classifications to highly advanced world classifications. Our contests are designed to create an environment where all students may excel and be recognized for their performance accomplishments without regard to gender, physical attributes, family economics, or previous experience.

We foster a competitive environment where all students, regardless of skill level, bring value and appreciation to the performance floor, and are recognized for doing so. We build character, social responsibility, and moral values by providing a structured, adult supervised environment, centered around the parent-student-teacher relationship.

Instructors are the backbone and core component of the activities. The scoring process is designed to acknowledge and reward the contributions of our instructors and their staffs. We provide instructional and design educational opportunities to Instructors throughout the season through a blend of pre-season judges feedback, live side-by-side opportunities with judges, and post-performance critique with judges. To ensure the quality and consistency of judging and scoring, the SFWGA assigns a Judging Administrator to oversee the entire Judging process, and to recruit the highest caliber judges throughout the country, many of whom are Finals Judges in World Championships.

## *our promise.....*

We are committed to supporting Music and Arts programs in our school systems, and ensuring the existence of the SFWGA for future generations. We do this through fiscal responsibility, the promise to live within our financial means, and the promise to continually re-invent ourselves to meet the changing needs of the community. We encourage instructors and designers to expose their performers to a wide variety of music and performance themes during their high school years, and to reach beyond the status quo, implementing new and untried performance ideas.

SFWGA





# Here We Grow

2024 **STONEMAN**  **DOUGLAS**

DIRECTOR  
DEAN BROADBENT



## STAFF

ALY DEWERFF, EMMA MARTINEZ,  
DANNY JOUBERT, JACKIE SHELLEY,  
& GHEA SAMUEL

## MEMBERS

DANIELLE ELIAZ	TAYLOR NICOLosi
SIENNA GOLDMAN	ISABELLA ORTEGA
GAVEN GRAHAM	ARIANA POVIO
OLIVIA LIGHT	ABBY REYES
LEAH MATOS	AVERY STURGES
ADDISON MERCADO	ALEXA YALE



# Stoneman Douglas WINTER CONTEST

Silver Trail JV	SRAA	12:00 PM
Flanagan HS JV	SRAA	12:08 PM
Cypress Bay High School JV	SRAA	12:16 PM
Break	12:24 PM	
Immokalee HS	SRA	12:30 PM
Palm Beach Central JV	SRA	12:38 PM
William T Dwyer HS	SRA	12:46 PM
Santaluces High School	SRA	12:54 PM
John I Leonard HS	SRA	1:02 PM
Lunch	1:10 PM	
Hialeah Gardens	SAAA	2:00 PM
Doral Academy Winter Guard	SAAA	2:08 PM
Flanagan A	SAAA	2:16 PM
Western High School	SAAA	2:24 PM
Stoneman Douglas A	SAAA	2:32 PM
Martin County High School Color G.	SAAA	2:40 PM
Silver Trail Varsity	SAAA	2:48 PM
Pines Charter Winter Guard	SAAA	2:56 PM
Break	3:04 PM	
Jensen Beach HS	SAA	3:12 PM
Cypress Bay HS	SAA	3:20 PM
Nova HS	SAA	3:28 PM
West Broward A	SAA	3:36 PM
Palm Beach Gardens Varsity	SAA	3:44 PM
Hialeah HS	SAA	3:52 PM
Seminole Ridge HS	SAA	4:00 PM
Dinner	4:08 PM	
Jupiter HS	SA	5:30 PM
Palm Beach Central HS	SA	5:38 PM
Monarch HS	SA	5:46 PM
Break	5:54 PM	
Stoneman Douglas World	SW	6:02 PM
Flanagan World	SW	6:12 PM
Relentless	IW	6:22 PM
Break	6:32 PM	
Stoneman Douglas Per	6:42 PM	
Retreat/Awards	7:00 PM	



STONEMAN DOUGLAS

# REGIMENT SHOP

ORDER  
ONLINE



WWW.EAGLEREGIMENT.COM



FEARING DAUGHTER SIGNS

# saund



STONEMAN DOUGLAS WORLD 2024

## DIRECTOR

DEAN BROADBENT

## STAFF

EVAN ZUBKOV, MATT WINANS,  
EMMA MARTINEZ, DANNY JOUBERT,  
JACKIE SHELLEY, GHEA SAMUEL,  
KRISTI SEXTON, NICOLE DARBY RMIREZ,  
ALY DEWERF, & NICK VIZZA

## MEMBERS

SAM BRESSLER, SAM CITRON, MATEA COHEN,  
ALLIE COSTA, ANGELINA CURREA, SYDNEY DAVIDSON,  
KAMARIA FLETCHER, ELYSSA HARRISON,  
MACKENZIE JAY, KEIRA KLEINFELD,  
ZARA PEART, VANESSA PIERANTONI,  
HADLEY RENDERGAST, HELEN ROBLES,  
DANIELLE ROSS, MALIAH SMITH,  
MAHA SIDDIQUI, NATALIE VARGAS,  
STEFFAINE WALKER, & MAYA WILLIAMS





# STONEMAN DOUGLAS PERCUSSION

★ EXHIBITION

*Indoor Percussion*

**Unit Director** Jed Davis

**Band Director** Steve Rivero

**Staff** Dejur Kirnon, Noah Kaplan, Luke Bailey,  
Kevin Molina, Derek McRea, Josh, Guttveg,  
& Surya Kaniyur

**Show Title** ***"THE ARTIST"***





# SEMINOLE RIDGE

★ SAA CLASS

*Winter Guard*

**Unit Director** Ally Bobinchuck

**Band Director** Nickolaus Hofmann

**Staff** Esther Mendoza, Judy Ortega, Alex Canario,  
& Reagan Milillo

**Show Title** ***"THIRD TIME'S THE  
CHARM"***





# *Contest Judges...*

EQUIPMENT: Jen Karp

MOVEMENT: Dee Dee Shank

DESIGN: Kevin Bell

GE: Justin Sullivan

GE: Jack Pursifull

TIMING & PENALTIES: Joan Joselyn

CHIEF JUDGE: Randy Nelson

## ***SPECIAL THANKS***

The Stoneman Douglas Indoor Programs would like to say a big thanks to **Lauren Susman** and the entire **MARCHING EAGLES PARENT ASSOCIATION** for organizing and running today's event! We couldn't have done it without the love and support you all show us everyday!

*Be Positive  
Be Passionate  
Be Proud to be an Eagle*

SEWINGGA EVENT STAFF



**STONEMAN DOUGLAS**  
COLORGUARD

CHAMPION





# SANTALUCES HS

★ SRA CLASS

*Winter Guard*

**Unit Director** Sabrina McCranels

**Band Director** Marc Frezin

**Staff** Diana Hurtado & Yahir Rosales

**Show Title** ***"RUINS"***








PLAYFUL





RELENTLESS 2024 PRESENTS...

# Fragments of Her



Set to excerpts from Carolyn Forché's epic poem "On Earth," the music follows one woman's journey through the space between life and death. Exploring memories of childhood, of war, of love, and of loss, 'Fragments of Her' amplifies the beauty, pain, and fragility of human life from a collective female perspective.

Relentless is under the direction of Nicholas Rodriguez and Michelle Morales

Additional design and technical staff includes: Jaime Hernandez, Matt Winans, Olivia Payne, Carlos Herrera, Melissa Diaz, Korey Craven, Emma Adcock, Travis Wade, Stephanie Chavez, Shannon Causey

Sound Design: Michelle Morales

Tarp/Flag/Graphics Design: Travis Wade

Media & Admin: Tamiris Delgado & Marina Antunez

Captains Include: Tatiana Nemeroff & Kiera Gleek

Relentless will be performing locally in the South Florida Winter Guard Association, as well as with Winter Guard International at the Miami regional. Our season will finish off in Dayton at the 2024 WGI World Championships!

Please visit us on the web at [www.wearerelentless.org](http://www.wearerelentless.org) and be sure to "like" our Facebook Fan Page and follow us on Instagram!

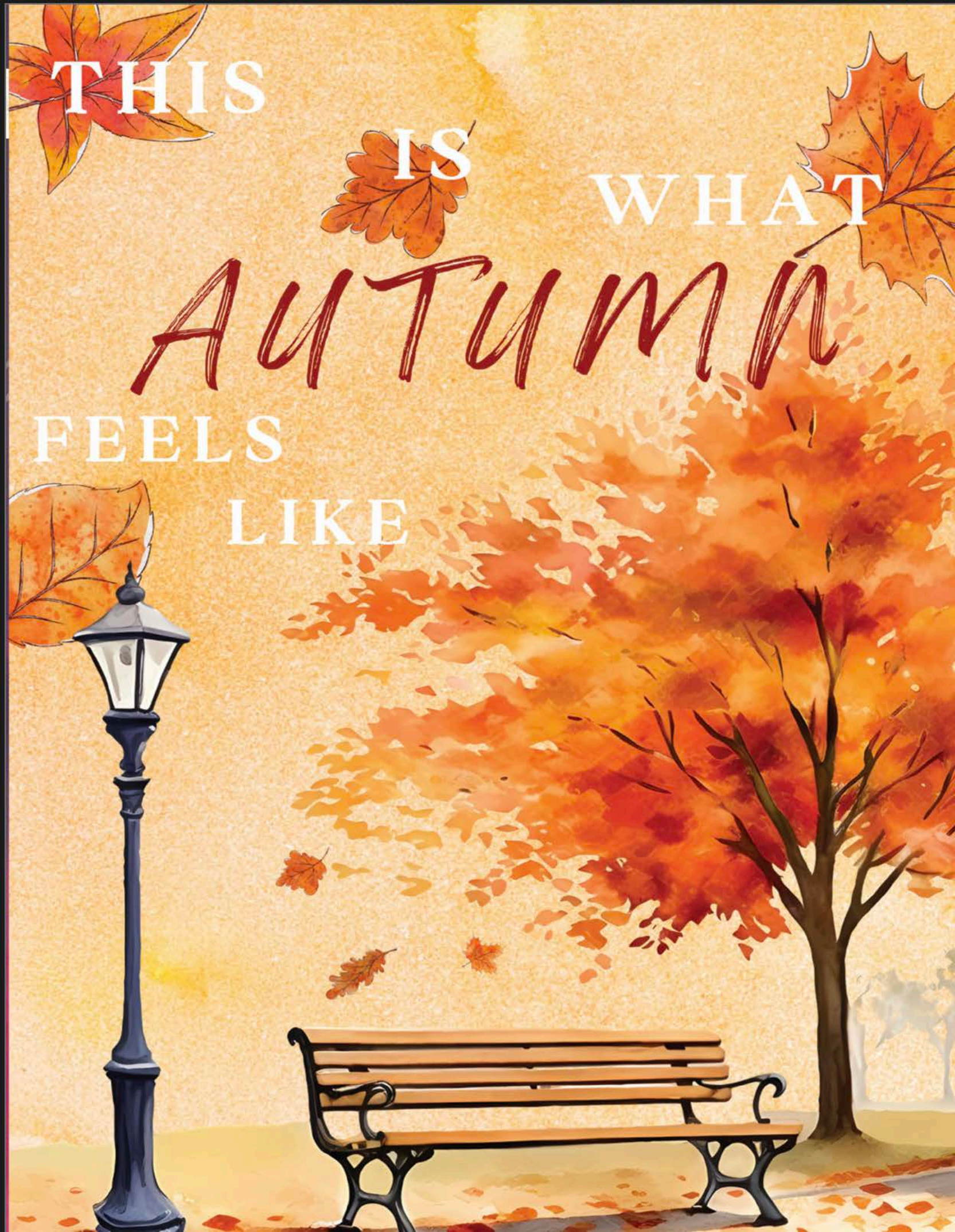


**STONEMAN DOUGLAS**  
*COLORGUARD*

**CHAMPION**

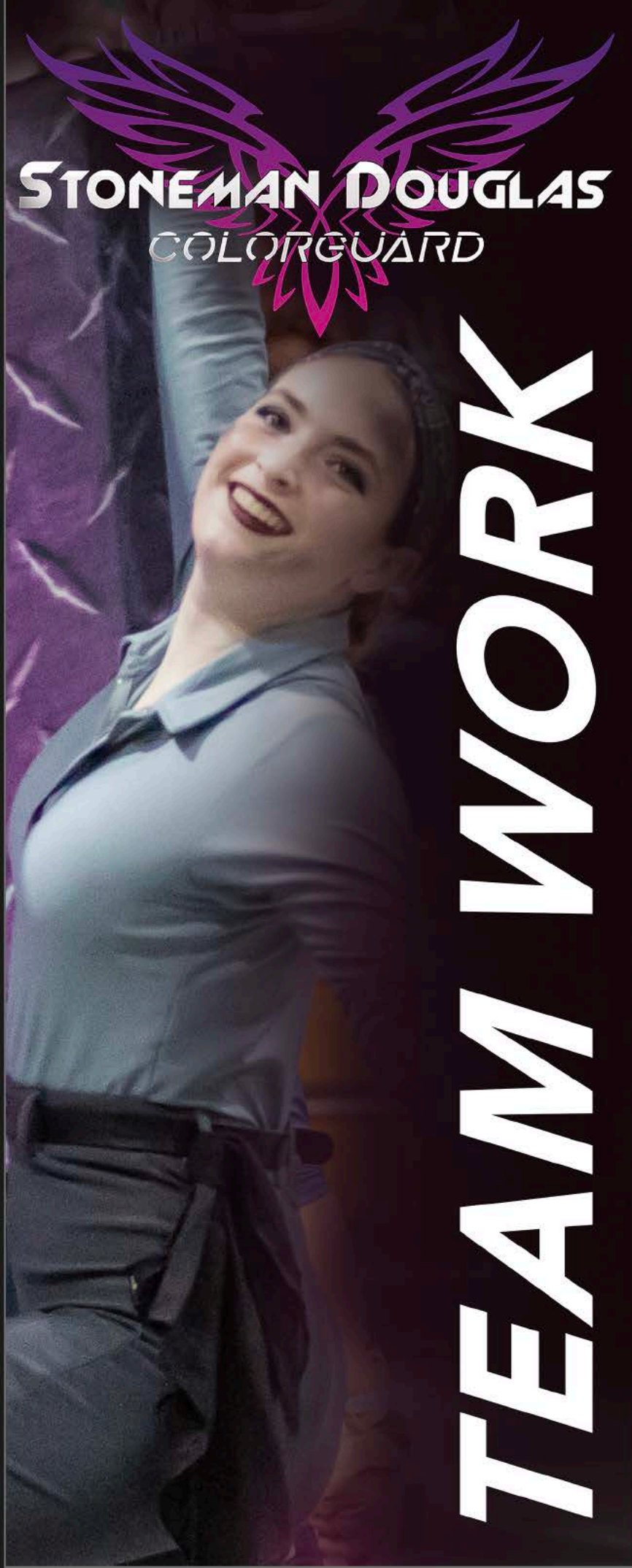






THIS  
IS  
WHAT  
AUTUMN  
FEELS  
LIKE





**STONEMAN DOUGLAS**  
COLORGUARD

# TEAM WORK



# WESTERN HS

★ SAAA CLASS

*Winter Guard*

**Unit Director** Makayla Ankeney & Alura Gasper

**Band Director** Johnnie Tracey

**Staff** Sydney Levy

**Show Title** ***"HOIST THE COLORS"***





**STONEMAN DOUGLAS**  
COLORGUARD

**INSPIRE**







**MI  
BARRIO**

**JOHN I. LEONARD**

*Winter Guard*

★ **SRA CLASS**

**Unit Director** Adianez Suarez

**Band Director** Milton Joselyn

**Staff** Rose Decius and Olivia Diaz

**Show Title** **"MI BARRIO"**



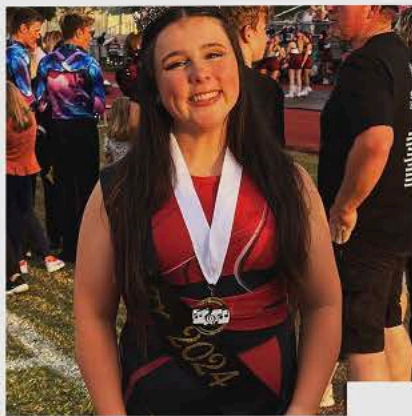


# STONEMAN DOUGLAS COLOR GUARD

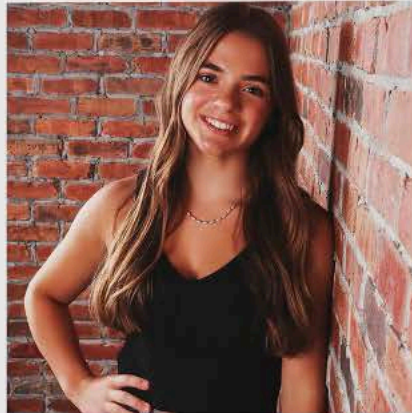
Class  
of 2024



Graduating  
Seniors



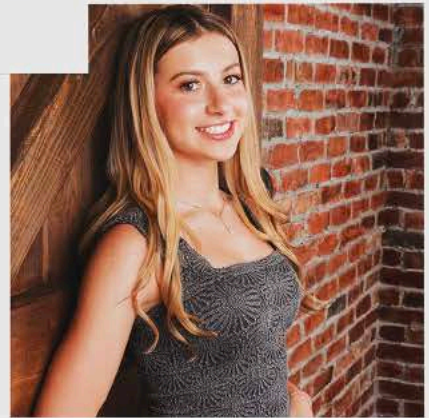
Elyssa



Stepy



Helen



Sam

MARJORY STONEMAN DOUGLAS  
HIGH SCHOOL





STONEMAN DOUGLAS  
COLORGUARD

PASSION



# WEST BROWARD A

★ SAA CLASS

*Winter Guard*

**Unit Director** Kevin Moreno

**Band Director** Dean Calmer

**Staff** Marla Eveillard, Laura Gasper,  
John Rankin-Williams, Shannon Berkstresser,  
Pauleen Yunis, Scarlett Díaz.

**Show Title** ***"WEST BREYONCÉ"***







**STONEMAN DOUGLAS**  
COLORGUARD



**EXCELLENCE**



# WILLIAM T. DWYER

★ SRA CLASS

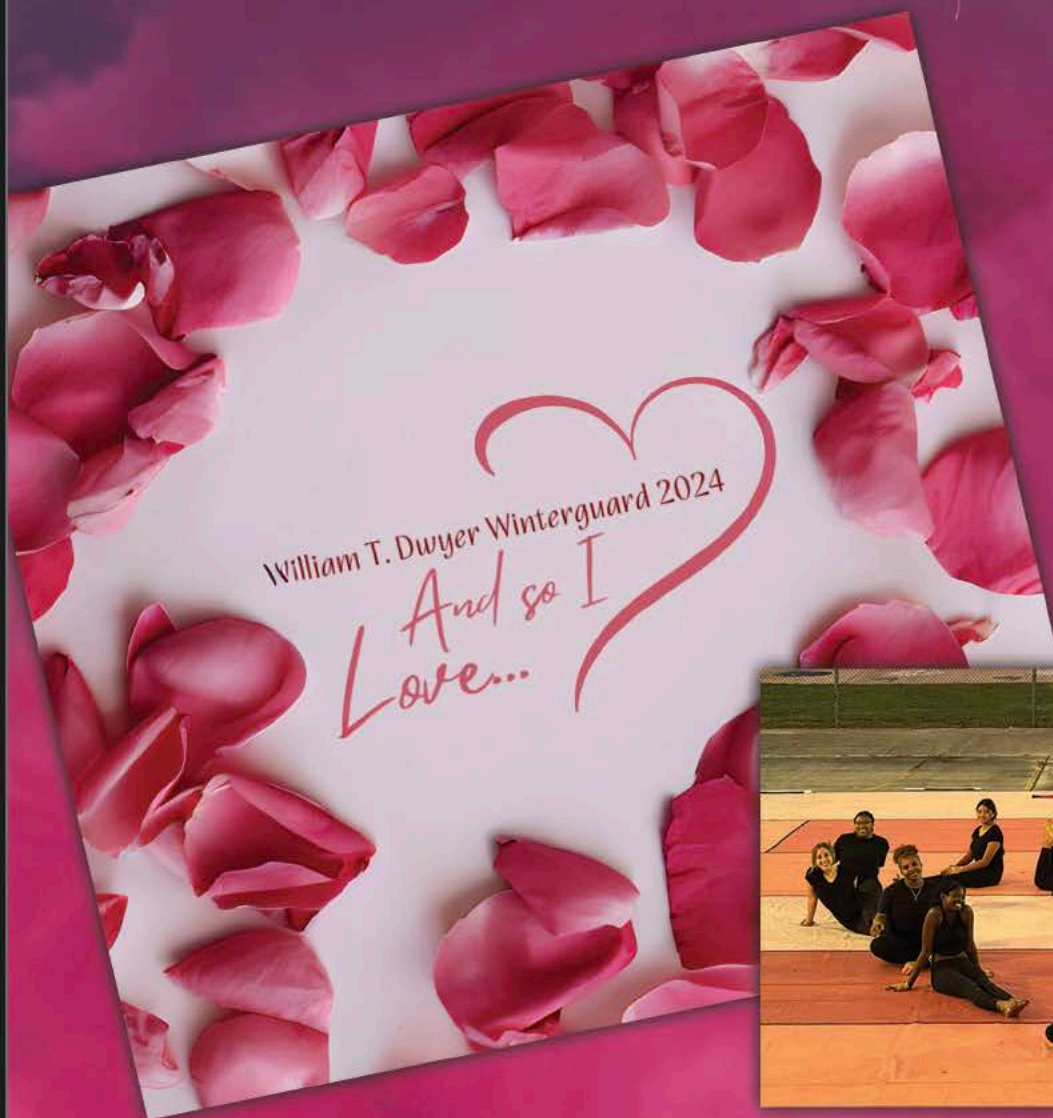
*Winter Guard*

**Unit Director** Reagan Milillo & Alex Canario

**Band Director** Allen Lamp

**Staff** Emily Peraza, Marlon Diaz, Caitlin Mueller,  
& Esther Mendoza

**Show Title** ***"AND SO I LOVE"***





**STONEMAN DOUGLAS**  
COLORGUARD

**PERFORM**





[WWW.EAGLEREGIMENT.COM](http://WWW.EAGLEREGIMENT.COM)

**STONEMAN DOUGLAS**  
COLORGUARD

**SEWGA**